

Bronchoscopy Devices

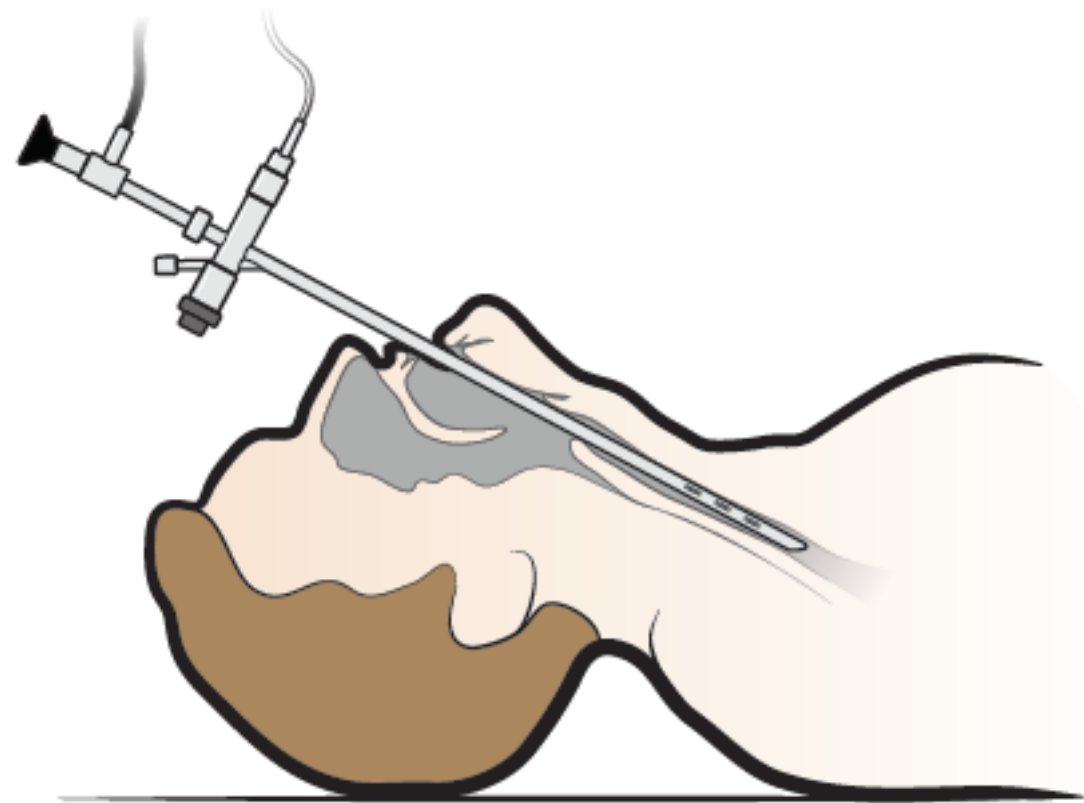
MFA Pulmonary Division

Samaneh Siyar

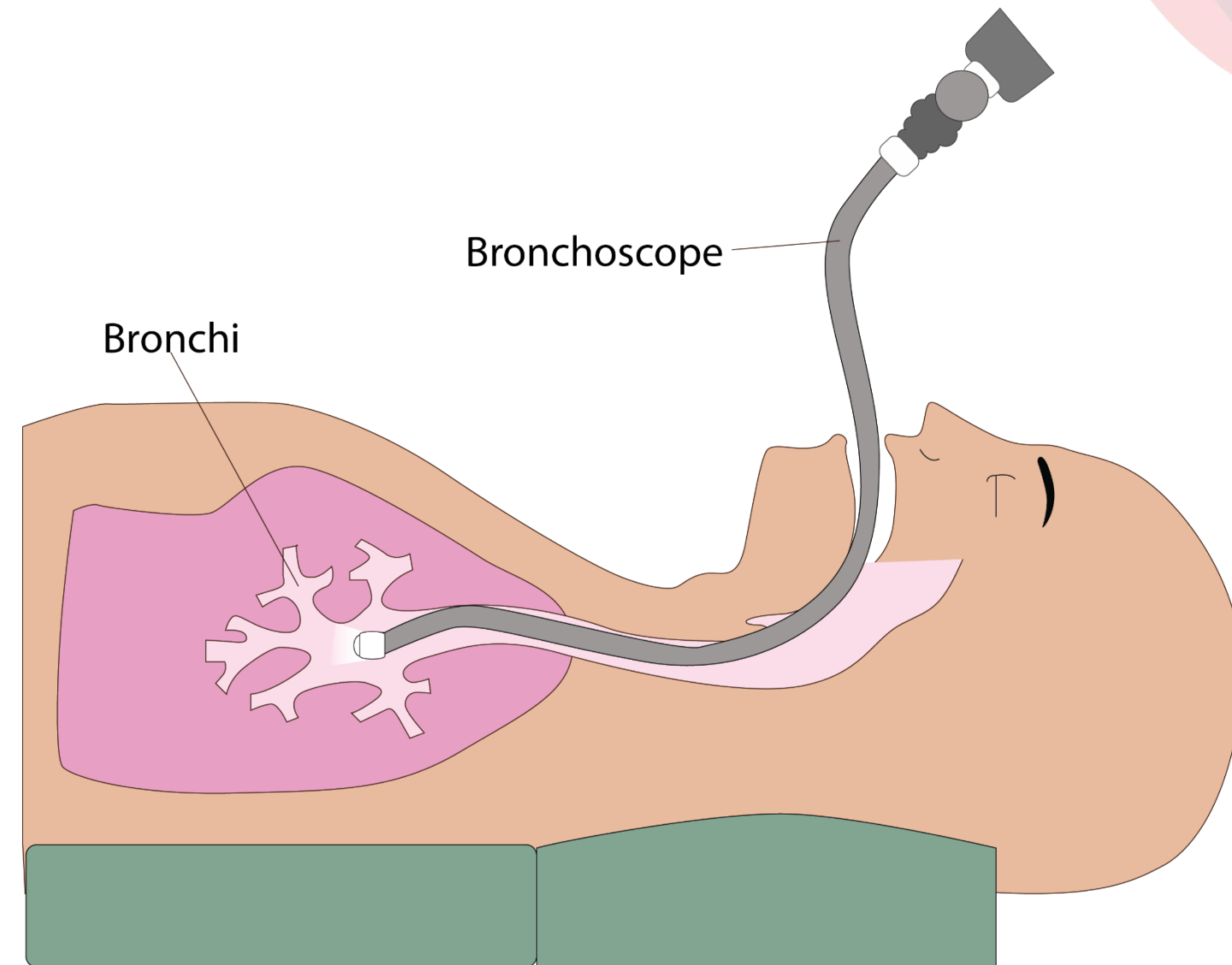
FUJIFILM



Bronchoscopy



Rigid Bronchoscopy



Flexible Bronchoscopy

Flexible bronchoscopes





• اهرم تنظیم زاویه

• دکمه فریز

• دکمه ساکشن

• کانال آب و هوا ❌

Scopes

FUJIFILM

**Electronic
Bronchoscope**

Pediatric

• **EB-530P**

✓ **Super-slim pediatric
bronchoscope**

- ✓ 1.2 mm forceps channel
- ✓ 3.8 mm outer diameter
- ✓ 120° field of view



- **EB-580S**

- ✓ **Therapy**

- ✓ 2.2 mm forceps channel
- ✓ 5.3 mm outer diameter
- ✓ 120° field of view
- ✓ Bending capacity : 210°/ 130°



- **EB-580T**

- ✓ **Therapy**

- ✓ 2.8 mm forceps channel
- ✓ 5.8 mm outer diameter
- ✓ 120° field of view
- ✓ Bending capacity : 180°/ 130°

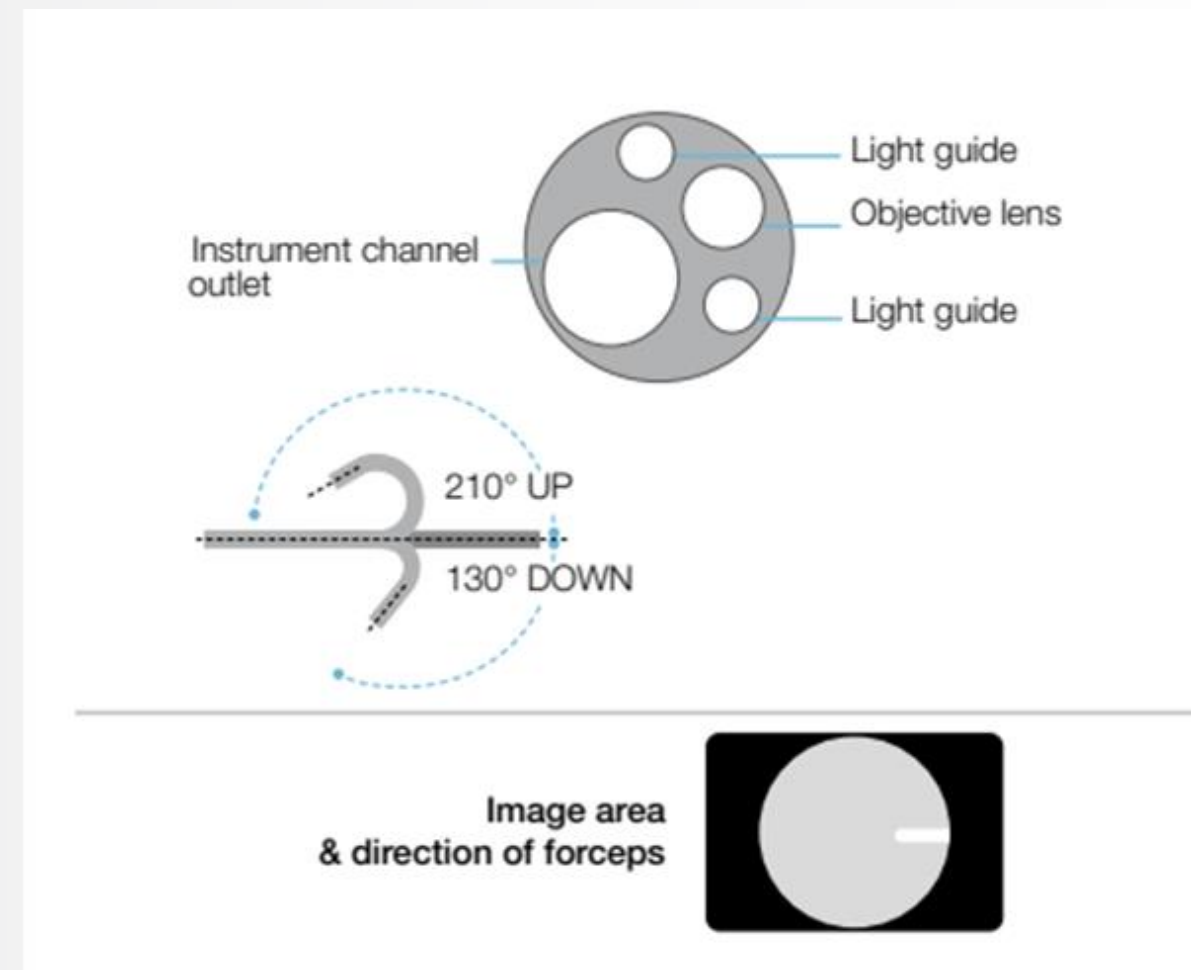


EB-710P VIDEO BRONCHOSCOPE Slim Standard Type



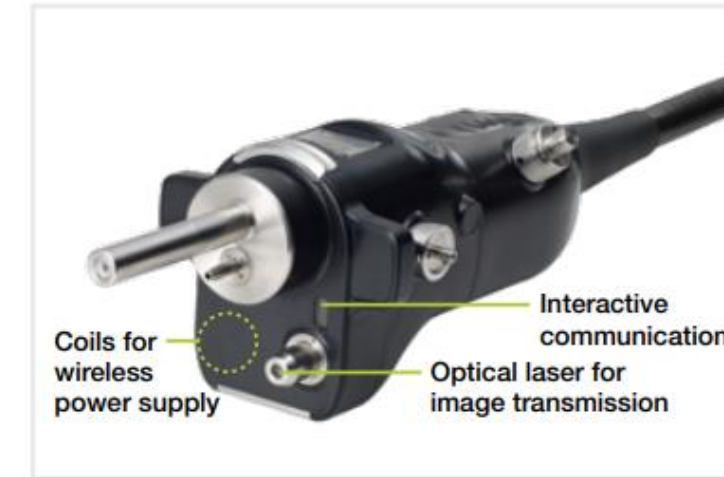
This slim standard video bronchoscope has a distal end diameter of 4.1 mm and a minimum instrument channel diameter of 2.0 mm. It is compatible with VP-7000 and EP-6000 processors. The One-Step Connector can be connected easily to the light source in a single step. The EB-710P is compatible with low temperature Hydrogen Peroxide Gas Plasma sterilization

- ✓ 2.0 mm forceps channel
- ✓ 4.1 mm outer diameter
- ✓ 120° field of view
- ✓ Bending capacity : 210°/ 130°



One-Step Connector for easy plug-in

The 700 series endoscopes can easily be plugged in by its One-Step Connector. This is the first connector to incorporate an integrated wireless power supply that provides high-speed transmission of data. The design helps to simplify the cleaning process and reduces the potential for accidental damage.



Rotation function

The new rotation function enables 120° rotation of the insertion portion.



Centre position



120° rotation

Enhanced control portion

New control portion equipped with a wider grip, new suction valve, and four switches. The new SUC valve SB-606 allows for easy connection to SUC tube. SB-606 & FV-003 are sterilized and single use

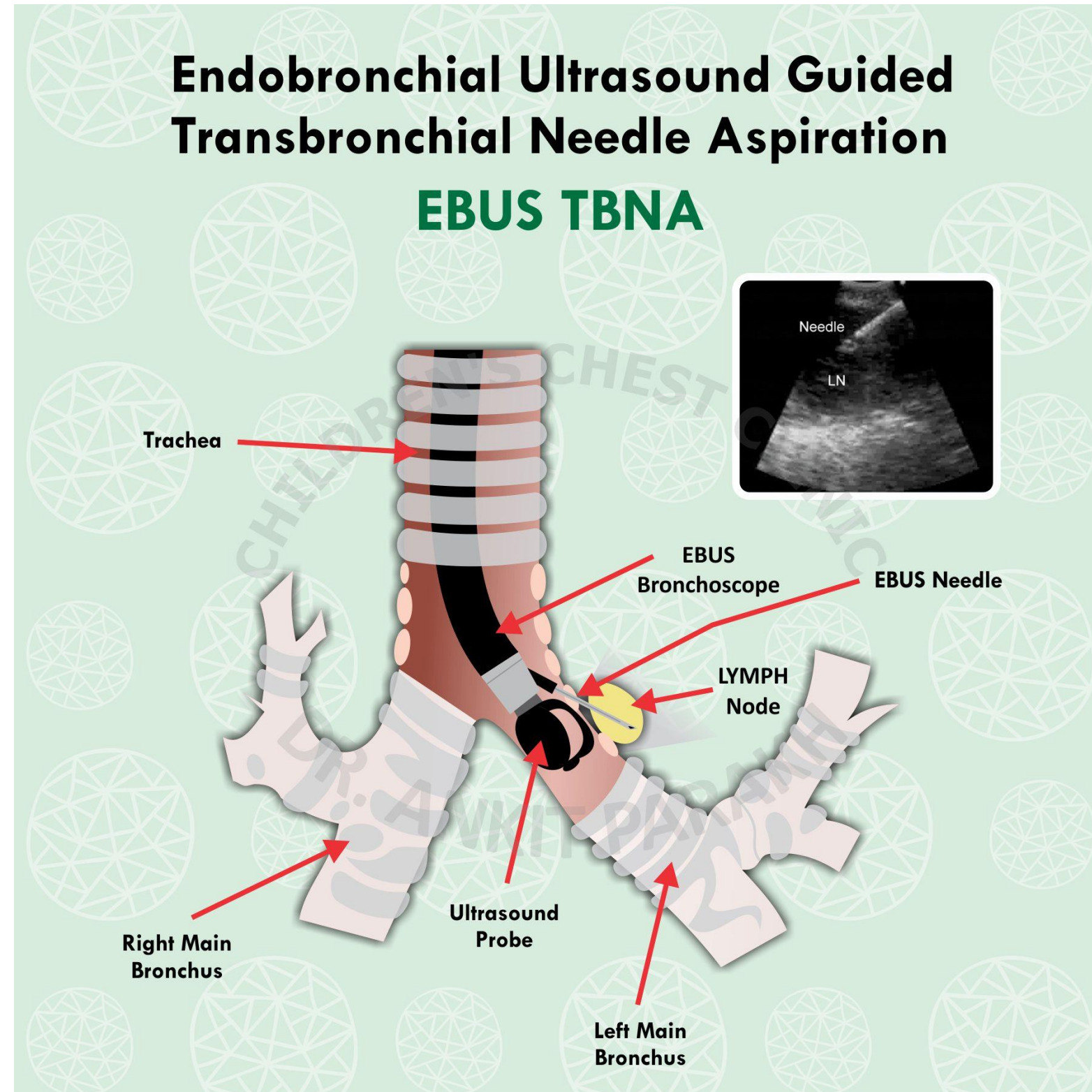


SB-606

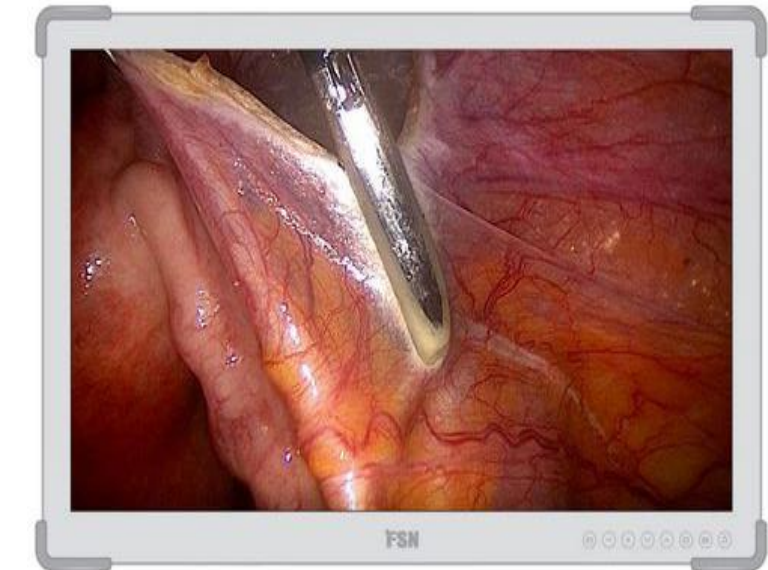


FV-003

Endosongraphy Bronchial(EBUS)



EB-530US ULTRASONIC BRONCHOSCOPE



EB-530US ULTRASONIC BRONCHOSCOPE



Viewing direction	10° Forward oblique
Field of view	120°
Observation range	3 – 100 mm
Bending capability	Up 130°/Down 90°
Distal end diameter	6.7 mm
Insertion tube diameter	6.3 mm
Minimum diameter of instrument channel	2.0 mm
Working length	610 mm
Total length	880 mm

Characteristics of EB-530US

10° forward oblique view



Like normal bronchoscope

Slim Insertion Tube
Φ6.7 mm



Smooth Insertion

2 Lights

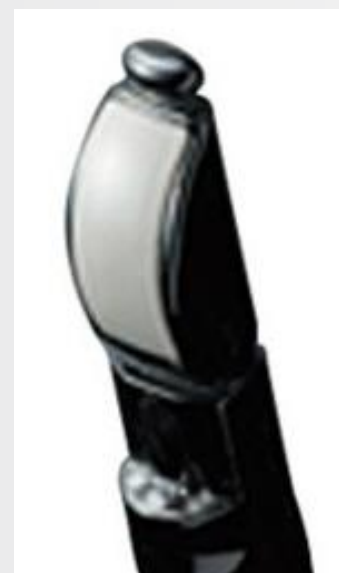


No dark areas

Ultrasonic Video Endoscopes, US Balloons



Linear
EBUS
B20BU



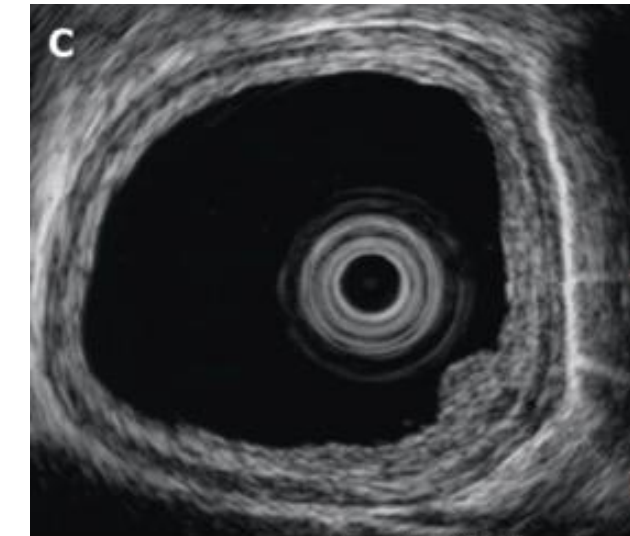
Radial EBUS

SP-900

Stand alone system

Better Image quality

High Frequency



PB2020-M



THANK YOU

